

QUESTIONNAIRE
 FOR DESIGN OF MOTOR CABLE REELS

Company: _____
 Contact person: _____
 Street: _____
 Zip code / city: _____
 Phone: _____
 Fax: _____
 e-Mail: _____ @ _____

DEPARTMENT
 Motor Cable Reels

Niedersachsenstr. 2
 48465 Schüttorf · Germany
 PO Box · Postfach : 1460
 48459 Schüttorf · Germany
 Phone : + 49 5923 81 - 248
 Fax : + 49 5923 81 - 100
 sales@stemmann.de

QUANTITY OF CABLE REELS

1. Cable reels _____ pieces

CABLE

2. Total power of the movable machine / cross section of the cable _____ kW / _____ mm²
 3. Outer diameter _____ mm
 4. Weight _____ kg/m
 5. Voltage _____ V
 6. Number of poles _____ PE + _____ poles
 7. Cable length operationally to be reeled + cable length not to be reeled _____ m + _____ m

SLIP RING ASSEMBLY

8. Number of slip rings _____ PE + _____ poles
 9. Max. current load of slip rings _____ A
 10. Fibre optic rotary connector yes no
 11. Heating yes no

DEVICE DATA

12. Travel speed or lifting speed _____ m/min
 13. Acceleration time / deceleration time _____ s / _____ s
 14. Mounting height above cable deposit up to centre of cable axle _____ m
 15. Feeding point track center track end
 16. Arrangement of your motor cable reel acc. to sketch (cf. addendum) 1 2 3 4 5
 17. Mode of winding spiral cylindrical
 18. Ambient temperature indoor use outdoor use _____ °C to _____ °C

REEL DRIVE

19. Voltage _____ V
 20. Frequency _____ Hz
 21. Duty cycle _____ %

ACCESSORIES

22. _____

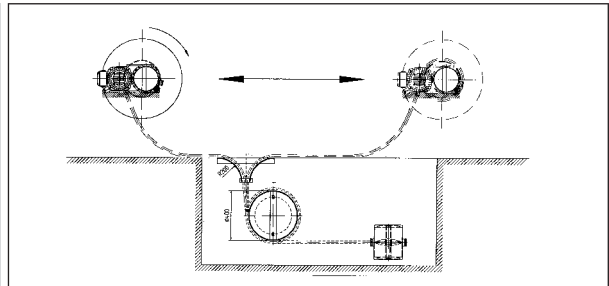
QUESTIONNAIRE

FOR DESIGN OF MOTOR CABLE REELS

APPLICATION ON MOBILE EQUIPMENT

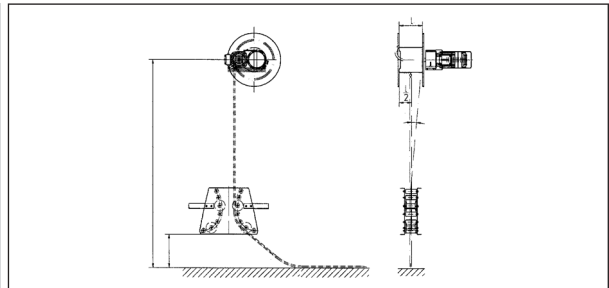
SKETCH 1:

The cable reel is stading on the movable machine.
The pay-off is effected horizontally.



SKETCH 2:

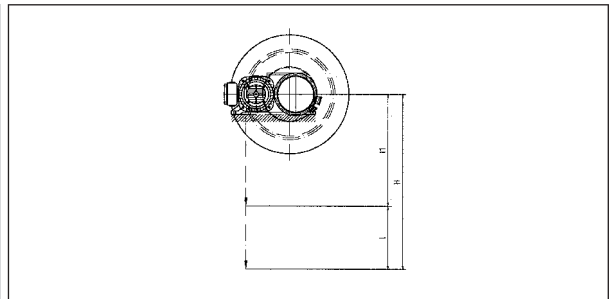
The cable reel is installed on a movable machine.
The cable pay-off is vertical and led through a diverting unit the cable is laid into a cable channel.



APPLICATION ON FIXED EQUIPMENT

SKETCH 3:

The cable reel is installed stationarily and is reeling the cable off vertically either upwards or downwards.



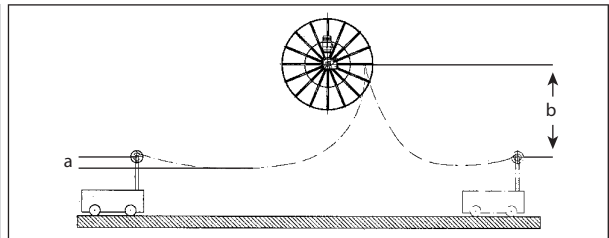
APPLICATION ON FIXED/MOBILE EQUIPMENT

Max. acceptable cable sag (a) m

Height difference, centre of reel axle to cable fix-point (b) m

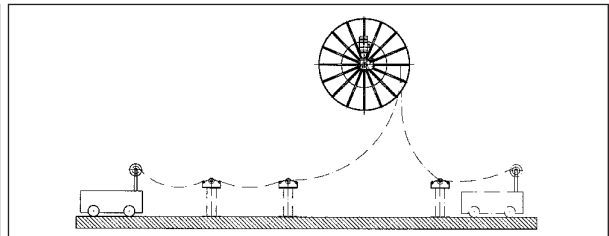
SKETCH 4:

The cable is installed stationarily or on a movable machine. The cable pay-off is "freely tensioned".



SKETCH 5:

The cable reel either is installed stationarily or on a moveable machine. The cable pay-off is "freely tensioned" and partly supported by cable guide rollers.



QUESTIONNAIRE
SKETCH SHEET

